

Williamson County Justice System Master Plan Report Summary

January 18, 2023



Master Plan Program

General Scope of the Program:

Based on 2020 Master Plan Program

Evaluate Program Post-COVID

Revised Program Issued

Sheriff's Office – November 2021

Juvenile Justice Center – December 2021

Adult Jail – January 2022

Schematic Design Issued

Special Operations – November 2021

Sheriff's Office – May 2022

Juvenile Justice Center – July 2022

Adult Jail – January 2023

Consultants:

Gresham Smith

Pulitzer/Bogard & Associates

TreanorHL

IC Thomasson

Don Dwore

Newcomb & Boyd

Lattatech

Camacho

Recap of Process

PLANNING

Parts 1+2: Jan 2019 – July 2020

Facilities Operational & Physical Assessments

Forecasts

Recommendations

Operating Principles and Macro Space

Programming

Site & Functional Diagrams

Capital Costs

Operational Costs

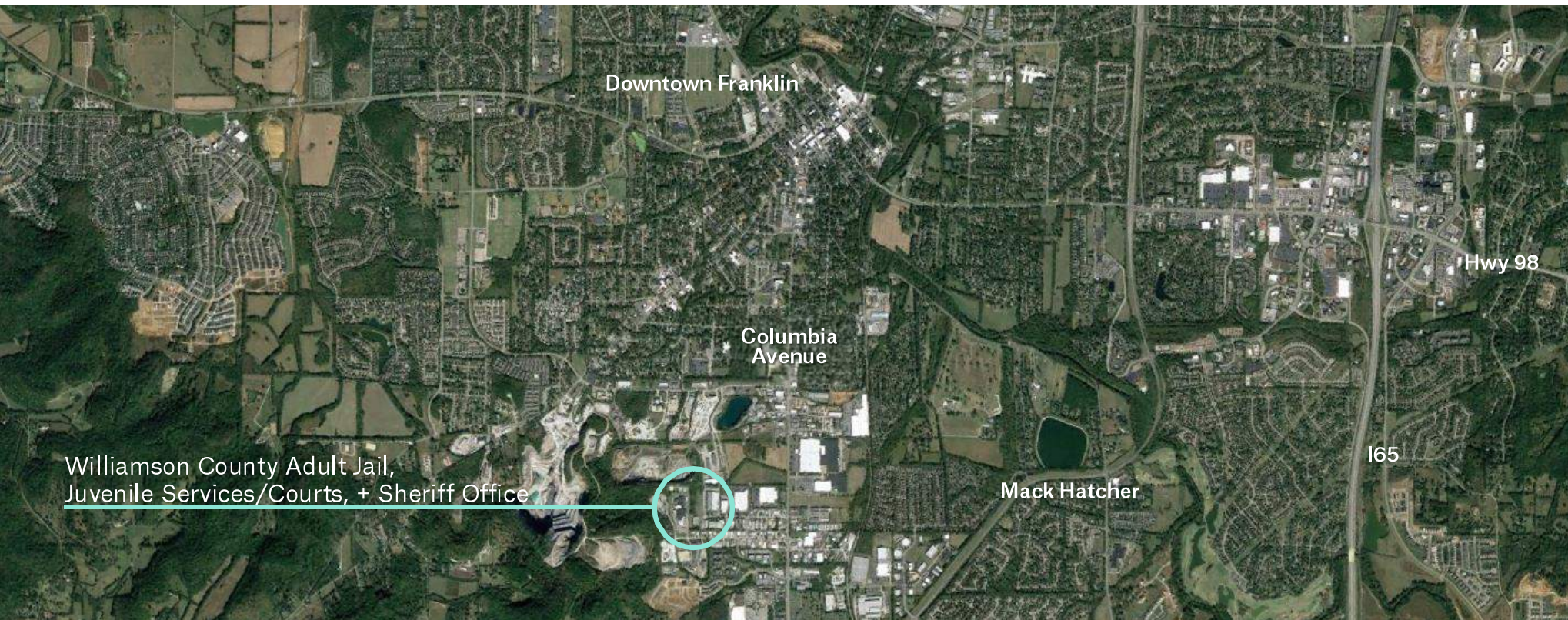
Implementation Timeline – 25 years (Target Year: 2044)

DESIGN

Concept Design: August 2021 – March 2022

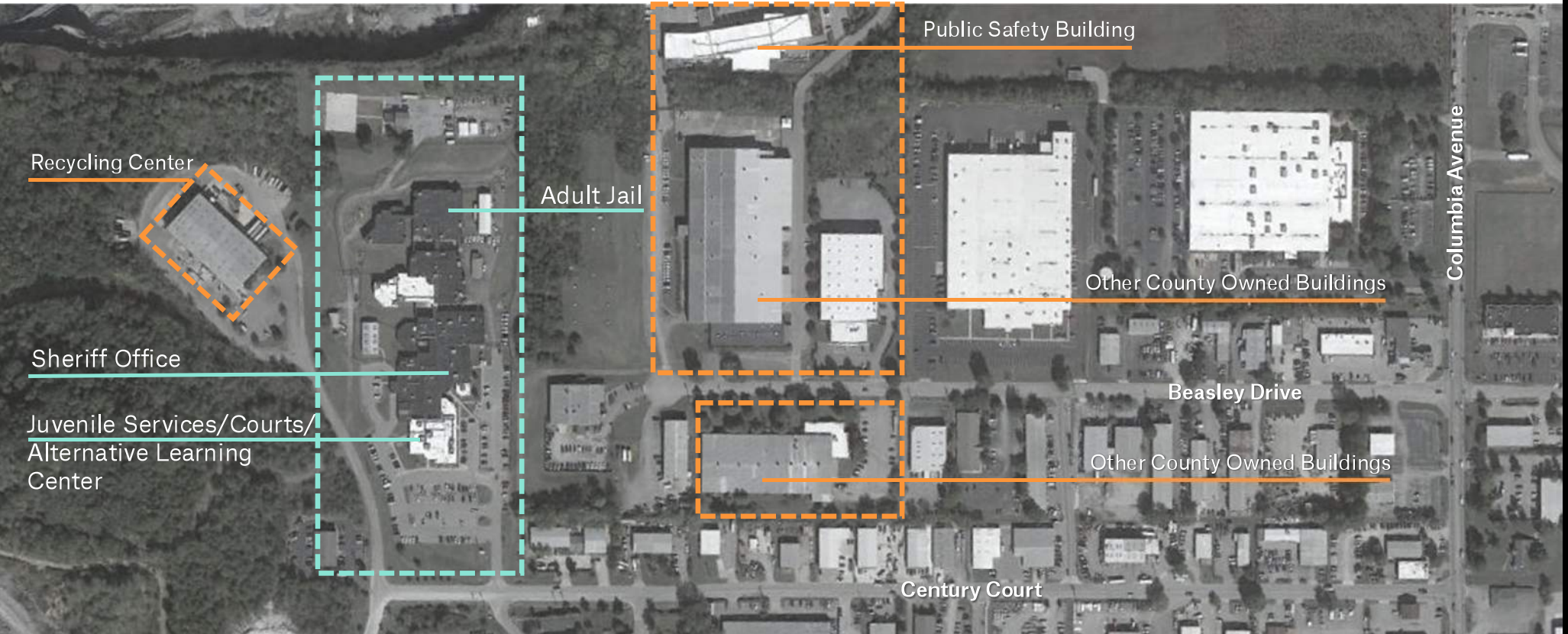
Schematic Design: March 2022 - January 2023

Facility Locations



Williamson County Adult Jail,
Juvenile Services/Courts, + Sheriff Office

Adult Jail, Juvenile Services/Courts + Sheriff Office



Recap of Existing Facilities & Population Growth

Williamson County Population Growth

1990	81,000
2000	126,000
2020	247,000
2030	310,000 +/-

Sheriff's Office

Originally Constructed in 1989
 Minor Addition Completed in 1999

Adult Jail

Originally Constructed in 1989
 Addition Completed in 1999

Juvenile Justice Center

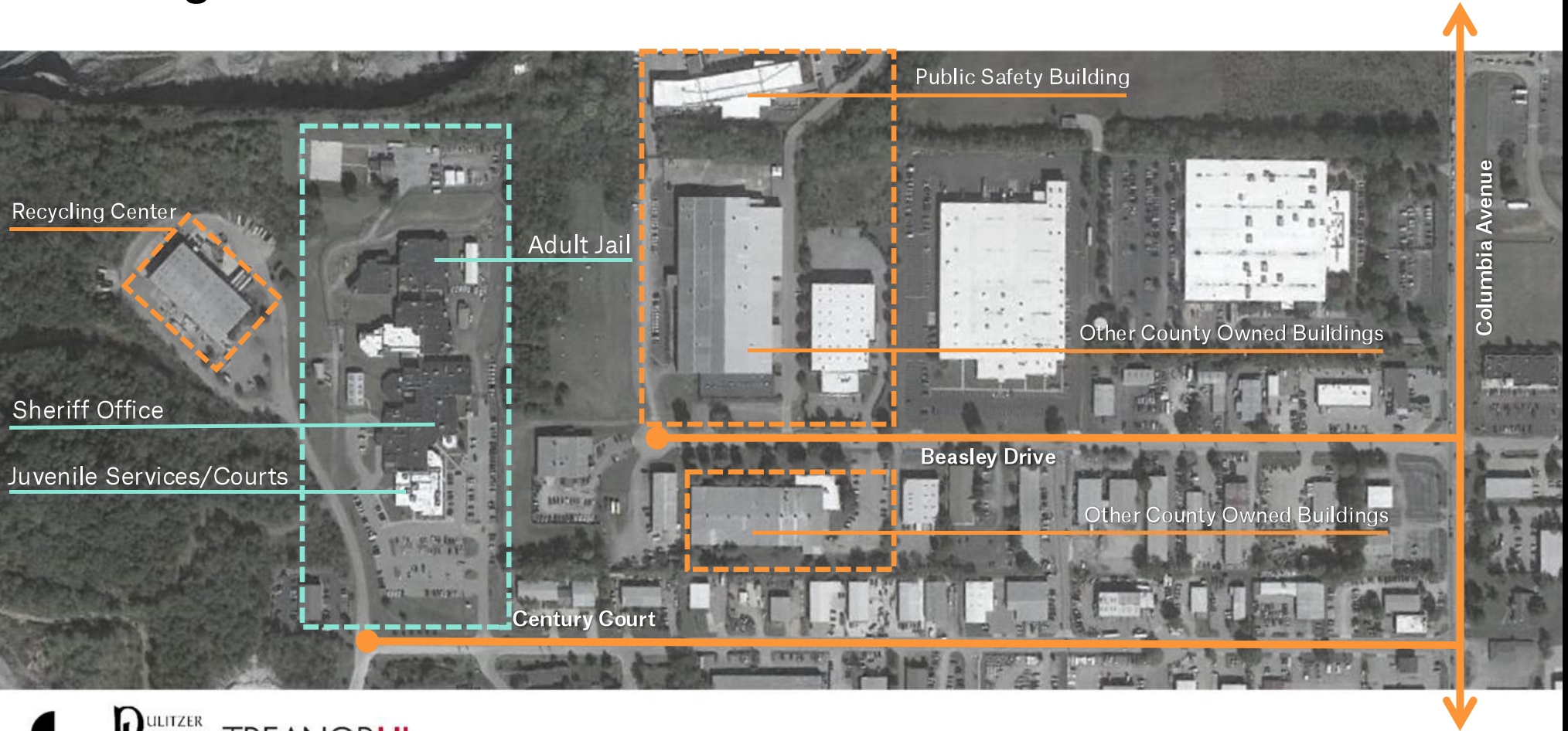
Originally Constructed in 1989
 Addition Completed in 1996



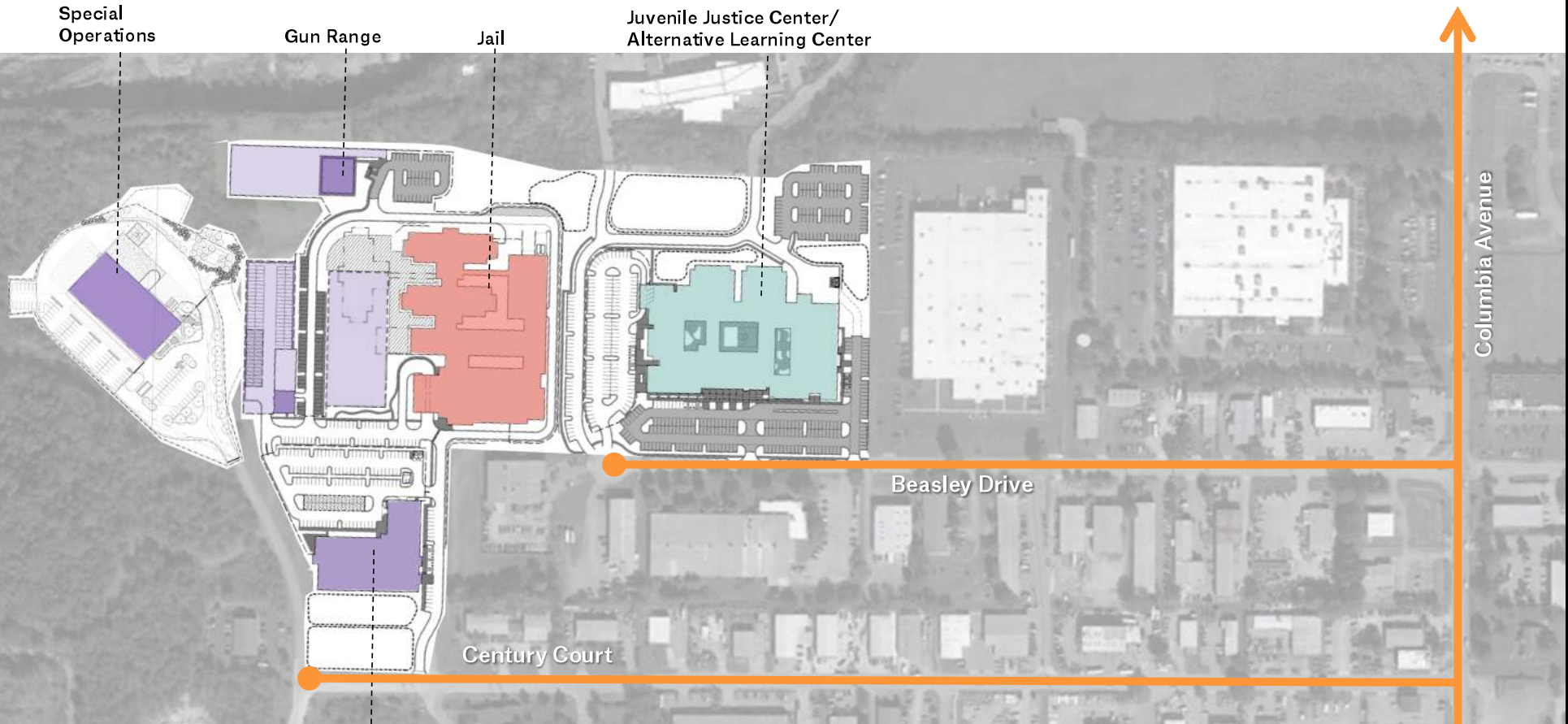
Master Plan Design



Existing Site Plan



New Overall Site Plan



Special Operations

Gun Range

Jail

Juvenile Justice Center/
Alternative Learning Center

Sheriff's Office

Century Court

Beasley Drive

Columbia Avenue



TREANORHL

Population Dynamics & Forecasts



Demographic Context

All components are heavily affected by regional growth in general and Williamson County growth in particular:

- University of Tennessee forecasts **1.8% average annual growth** for the next 30 years
- Williamson County population will be **58% larger** in 2044
- Middle Tennessee population will be **34% larger**
- Bordering counties will be **38% larger**

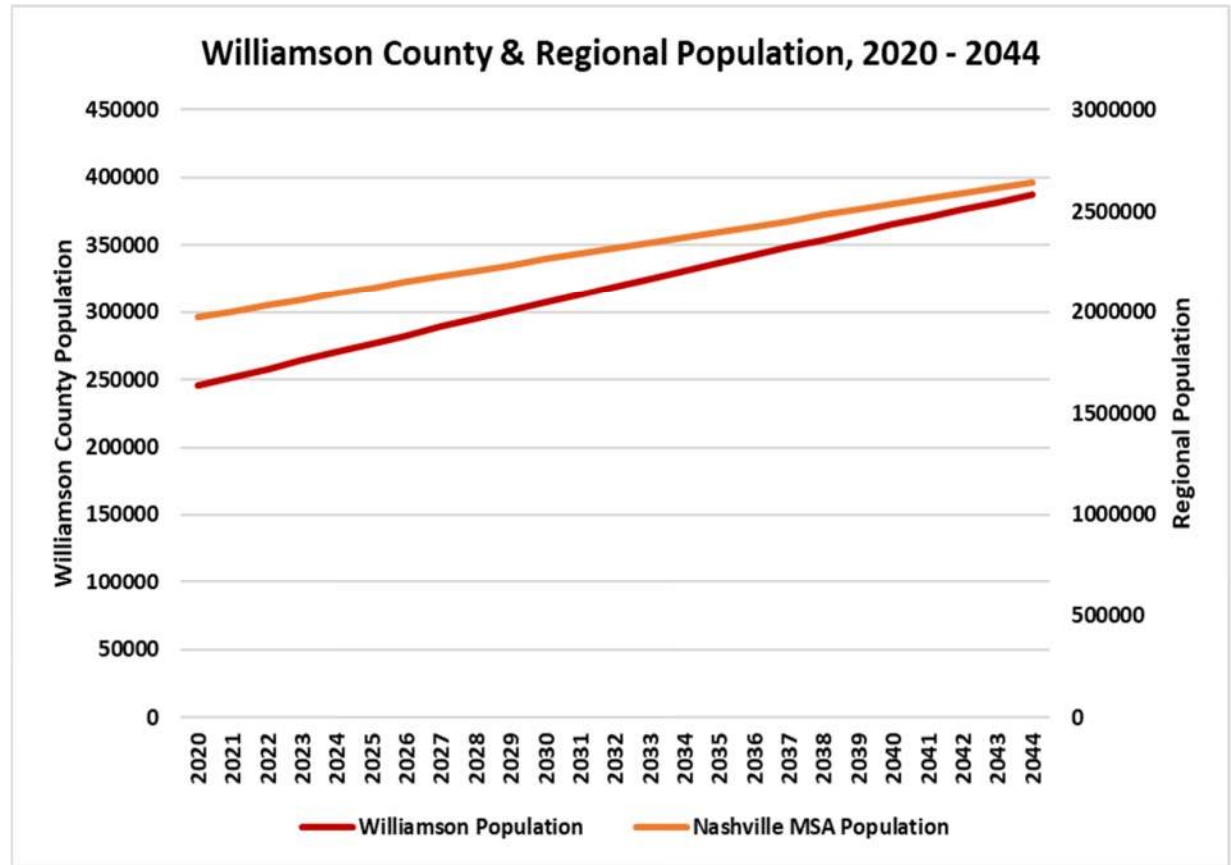


Chart Dated: February 2022



Juvenile Justice Center - Operational Needs

Metric	2019 (Current)	2044 (Projected)
County Population, Age 19 & Under	71,036	101,627
Juvenile Court Average Daily Court Events	83 Events	169 Events
Juvenile Services Annual Caseload	5,100 Cases +/-	28,000 Cases +/-
Juvenile Detention Average Daily Population	4 Juveniles	6 Juveniles
Juvenile Detention Bed Need	14.3	21.8
Juvenile Detention Capacity	12 Beds	32 Beds (Expandable to 40 Beds)
Respite Center Capacity	0 Beds	10 Beds (Expandable to 20 Beds)
Alternative Learning Center Capacity	80 Seats +/-	150 Seats (Expandable to 200 Seats)



Jail Capacity Analysis & Forecasts

2019 (Current)

Rated Capacity – 454 Beds

Average Daily Population (ADP) – 370 inmates

County Males Between Age 19 and 49 – 43,225

2044 (Projected)

Projected Capacity – 750 Beds

Average Daily Population (ADP) – 597 inmates

County Males Between Age 19 and 49 – 66,452

COVID Impact: 370 inmates (MP ADP) to 264 inmates in November 2022

Year	Forecast ADP	Males	Females	Peaking Factor (12%)	Classification Factor (10%)	Total Bed Need
2034 (MP)	531.5	414.6	116.9	63.8	53.1	648.4
2034 (Update)	478.1	372.9	105.2	75.3	47.8	601.2
2044 (MP)	623.6	486.4	137.2	74.8	62.4	760.8
2044 (Update)	596.5	465.3	131.2	93.9	59.7	750.0

Law Enforcement Statistics

- County Population – 14.8% growth since 2016
- County Population Projected Growth – Projected 2044 population (387,058) is **46.6% more** than today (est. 2023)
- Crime Rate¹ (Most Serious Offenses²) – 2021 crime rate represents a **31.1% increase** from 2016
- Arrest Rate¹ (Most Serious Offenses²) – 2021 arrest rate represents a **22.2% increase** than 2016

¹ Crime and arrest rates per 1,000 population

² Most serious offenses are those offenses classified as Group A offenses as report to the National Incident-based Reporting System (NIBRS).

Williamson County Juvenile Justice Center

Operational Assessment

- The Juvenile Courts/Juvenile Services are housed in a woefully inadequate facility
- The ability to properly serve all youth and families is significantly compromised by a lack of space and functionality
 - Juvenile Courts - Insufficient courtrooms
 - Juvenile Court Clerk - Insufficient space for staff and files
 - Juvenile Services - Insufficient space for staff to properly perform their work
- Co-location with the Adult Jail is a violation of current state statutes
- Juvenile Detention Center - Does not represent best practices
- Alternative Learning Center – Lacks parity with other Williamson County middle and high schools

Main Planning Objectives

- Meet the future needs of youth and families engaged with the legal justice system
- Comply with state statutes and contemporary best practices
- Complete separation of juvenile functions from the adult jail
- Provide new services to comply with ever increasing complexity of juvenile needs
 - Assessment Center - New concept for service hub to connect juveniles with needed services
 - Respite Center (Staff-secure Facility) - New concept for short-term protection for youth in trouble

Main Planning Objectives (continued)

- Juvenile Courts – Expand from 2 to 6 courtrooms
- Juvenile Court Clerk – Provide appropriate staff and file space and improve public interface
- Juvenile Services - Provide appropriate staff work environment to support a projected 400% increase in caseload
- Juvenile Detention (Secure Facility) – Provide best practices using direct supervision management
- Alternative Learning Center – Comparable programs and resources available to all WC schools

20,100
Existing BGSF

140,200
Master Plan BGSF (2020)

157,000
Updated Program BGSF (2022)

155,600
Schematic Design BGSF (2022)

Main Planning Objectives

	Juvenile Justice Center*	Clerk's Office	Alternative Learning Center	Total
Existing Square Footage	13,700	1,600	4,800	20,100
Master Plan BGSF (2020)	103,400	4,800	32,000	140,200
Updated Program BGSF (2021)	125,700	4,700	26,600	157,000
Schematic Design BGSF (2022)	117,400	5,700	32,500	155,600

* Existing Square Footage does not include the 4,000 square feet subsequently utilized at 300 Beasley.

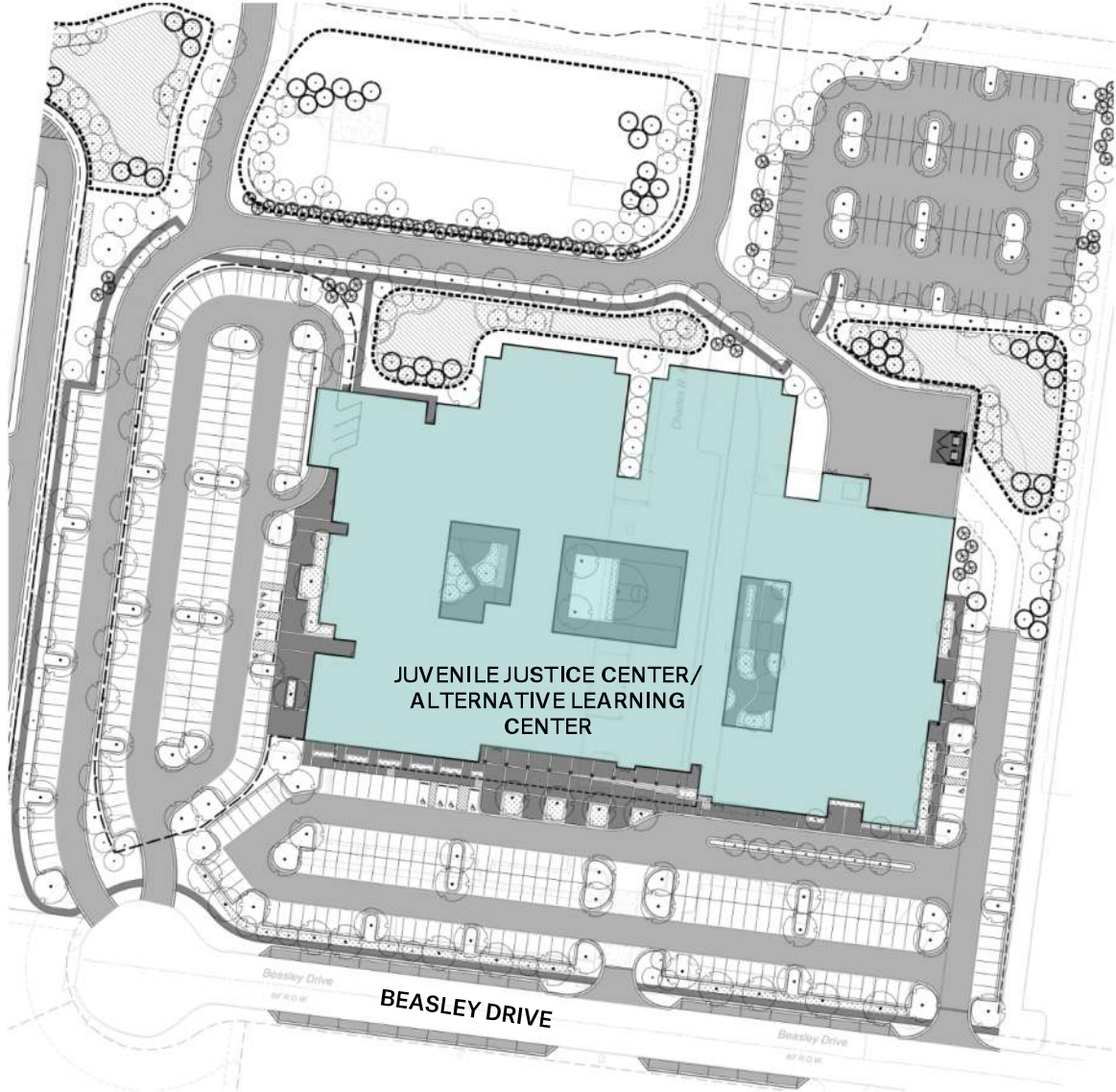
Operating Costs & Staffing - JJC

Category	FY22	Master Plan
Operating Costs (Expenditures) ¹	\$4,363,000	\$10,452,000 ²
Authorized Staffing (FT & PT)	53	130
Staffing Deficit (User Identified)	11	--

¹ Operating expenditures include FICA, social security, health insurance, maintenance, and other costs funded in other County budget line items.

² The MP projected operating costs (opening day) are based on 2019 expenditures (dollars)

Juvenile Justice Center
Site



Juvenile Justice Center

Level 1



Juvenile Justice Center

Level 2



Williamson County Jail



Operational Assessment

- The jail does not represent best practices for a contemporary adult correctional facility.
- Housing units are small and staff intensive to effectively operate.
- Not appropriately designed housing for inmates with mental illness or requiring specialized medical care.
- Current facility layout requires inmates to be escorted to programs and services, which is staff intensive.
- Insufficient space for programs and services.

Main Planning Objectives

- Operational paradigm change
 - Direct supervision in all housing areas, when staffing permits.
 - Expectation of normal adult behavior
- Staffing efficiency throughout all areas of the jail
 - Minimize inmate movement
 - Bring programs and services to housing and decentralized support areas
- Admission processing expedites Law Enforcement Officers return to street
- Focus on mental health treatment needs

108,600

Existing BGSF

335,600

834 Beds (2044)
Master Plan BGSF (2020)

292,500

664 Beds (2034)

351,700

920 Beds (2049)
Updated Program BGSF (2022)
64-bed modules assumed

270,100

592 Beds (2030)
Schematic Design BGSF (2023)
48-bed modules

Operating Costs & Staffing - Jail

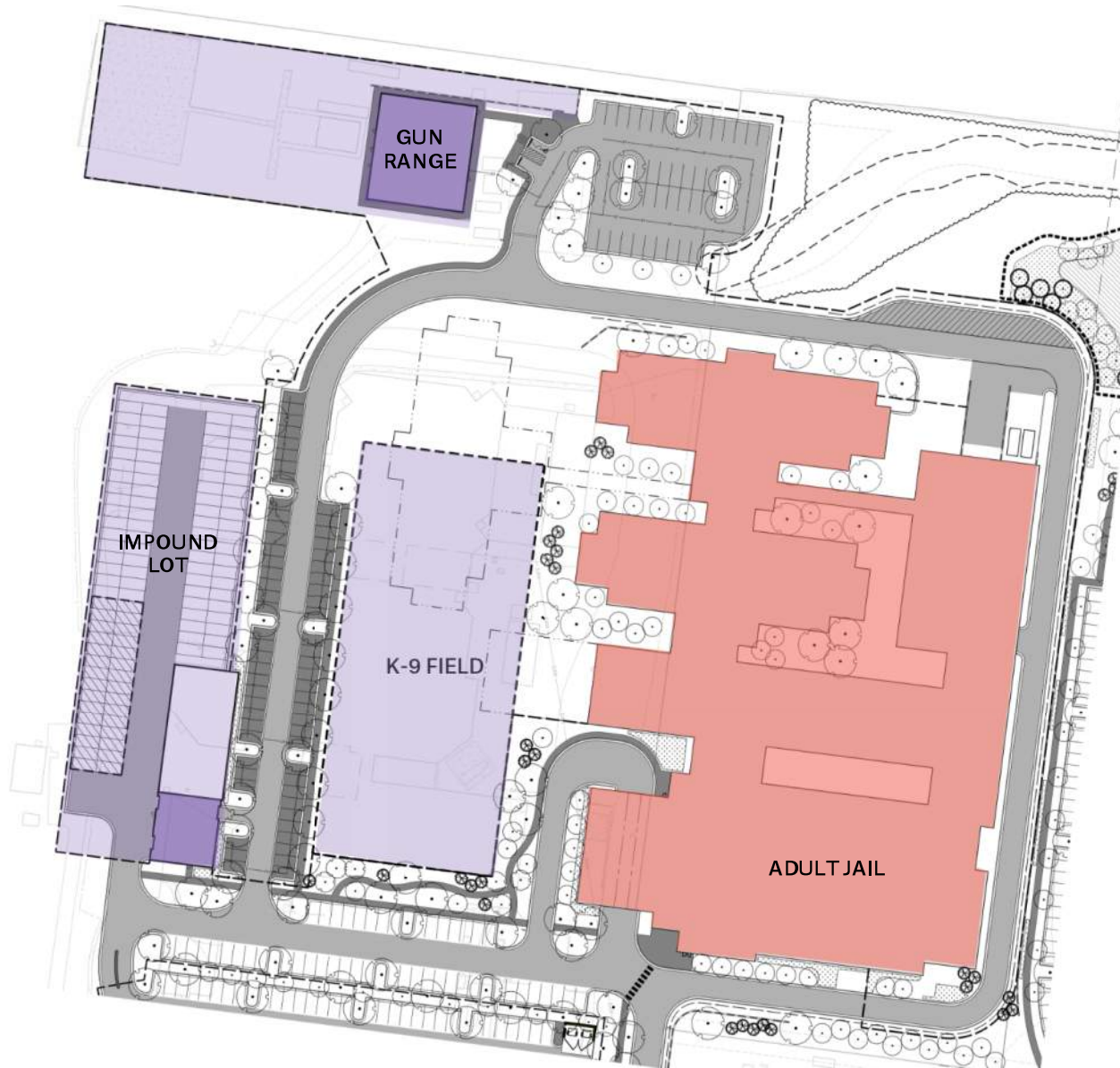
Category	FY22	Master Plan
Operating Costs (Expenditures) ¹	\$8,500,000	\$14,821,000 ²
Authorized Staffing (FT)	103	164
Vacant FT Positions ³	21	--

¹ Operating expenditures include FICA, social security, health insurance, maintenance, and other costs funded in other County budget line items.

² The MP projected operating costs (opening day) are based on 2019 expenditures (dollars)

³ Vacant FT positions as of June 30, 2022

Jail Site



Jail

Level 1

FUTURE DETENTION

DETENTION

FUTURE MEDICAL DETENTION

MEDICAL DETENTION

CENTRAL INTAKE

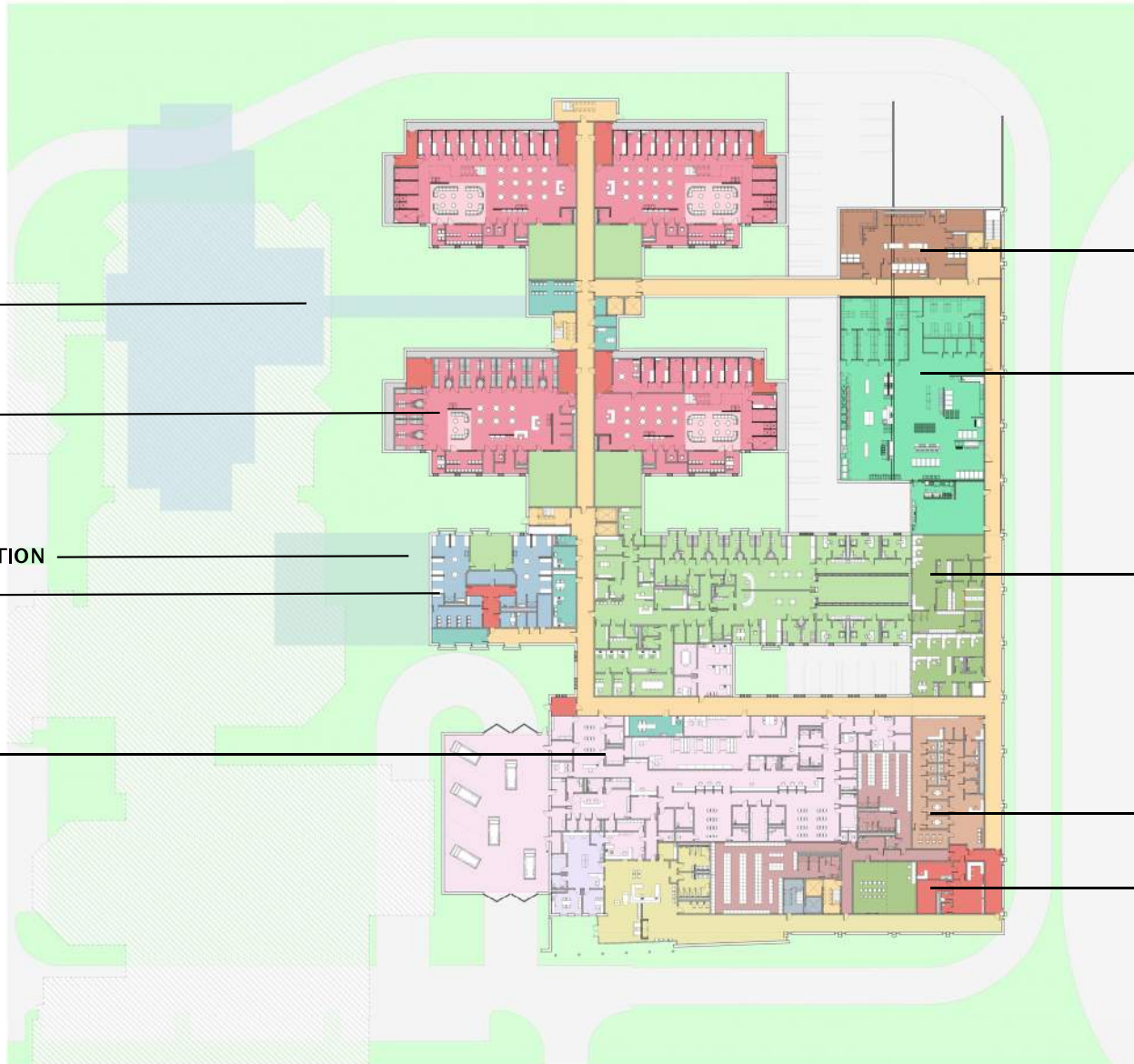
LAUNDRY

FOOD SERVICE

SECURITY OPERATIONS

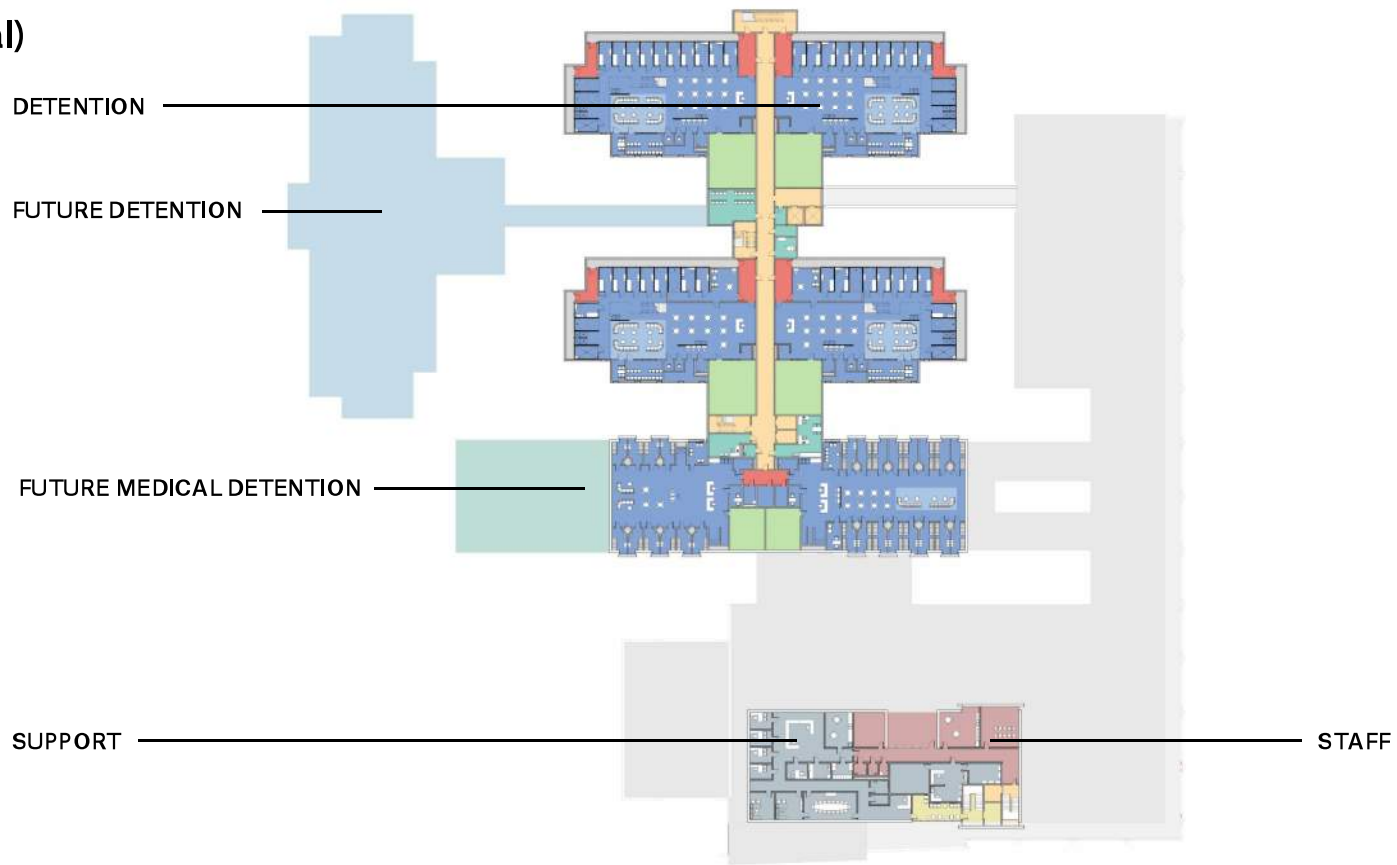
VISITATION

CONTROL



Jail

Level 2 (Typical)



Williamson County Sheriff's Office



Operational Assessment

- Williamson County Sheriff's Office has outgrown its Century Court location and has expanded by repurposing existing county buildings.
- The seven divisions now operate from four locations resulting in:
 - Fragmentation of the executive and command functions.
 - Fragmented work locations, which decreases productivity and communication.
- Facilities for evidence, armory, and gun range lack proper security and do not comply with contemporary practices.

Main Planning Objectives

- Consolidated headquarters
 - Decreases from four to two locations (headquarters/courthouse)
 - Six of seven divisions now in single location
- Increased sensitivity & safety for victims/witnesses
- Contemporary evidence storage/processing & armory

- Gun Range – Improved safety and training facilities

62,152
Existing BGSF

109,400
Master Plan BGSF (2020)

109,900
Updated Program BGSF (2021)

115,700
Schematic Design BGSF (2022)

Area per Component

	Special Operations	Gun Range	Sheriff's Office	Total
Existing Square Footage	49,000	1,100	17,600	67,700
Master Plan BGSF (2020)	38,000	6,700	64,700	109,400
Updated Program BGSF (2021)	29,300	12,500	68,200	110,000
Schematic Design BGSF (2022)	39,000	6,200	70,600	115,800

Operating Costs & Staffing - Sheriff's Office

Category	FY22	Master Plan
Operating Costs (Expenditures) ¹	\$19,074,000	\$22,626,000 ²
Authorized Staffing (FT)	225	262
Vacant FT Positions ³	21	--

¹ Operating expenditures include FICA, social security, health insurance, maintenance, and other costs funded in other County budget line items.

² The MP projected operating costs (opening day) are based on 2019 expenditures (dollars)

³ Vacant FT positions as of June 30, 2022

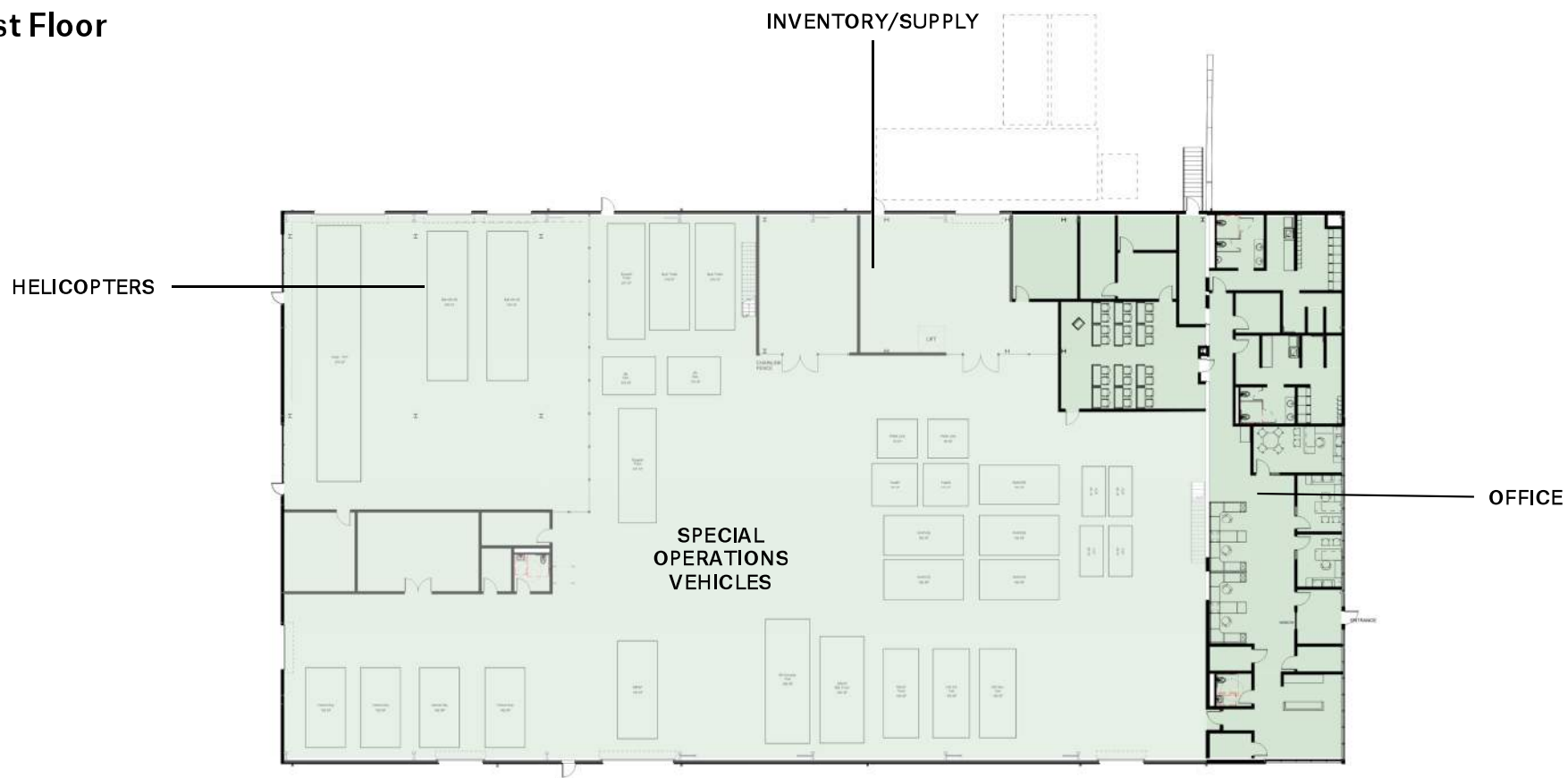
Special Operations

Site Plan



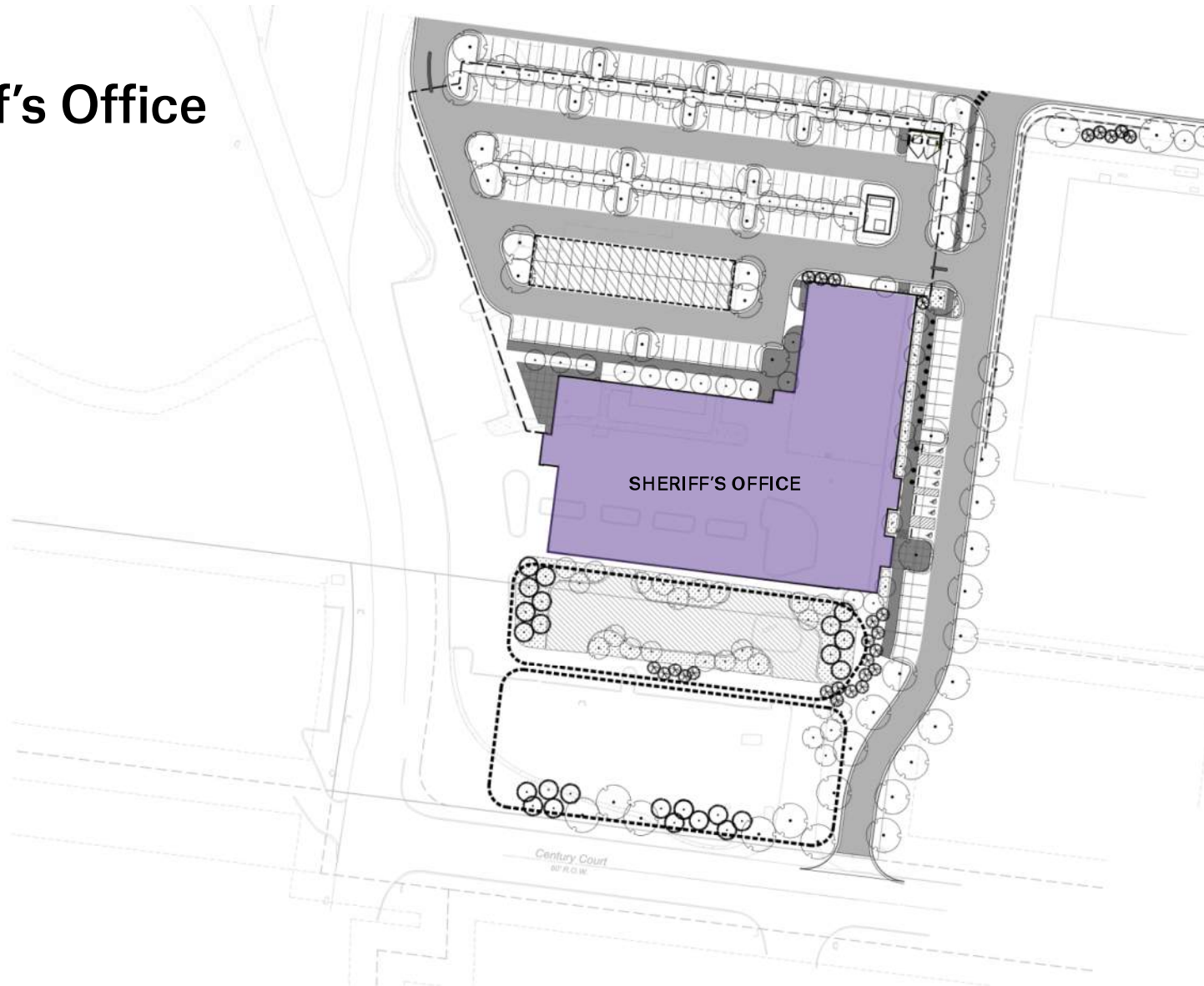
Special Operations

First Floor



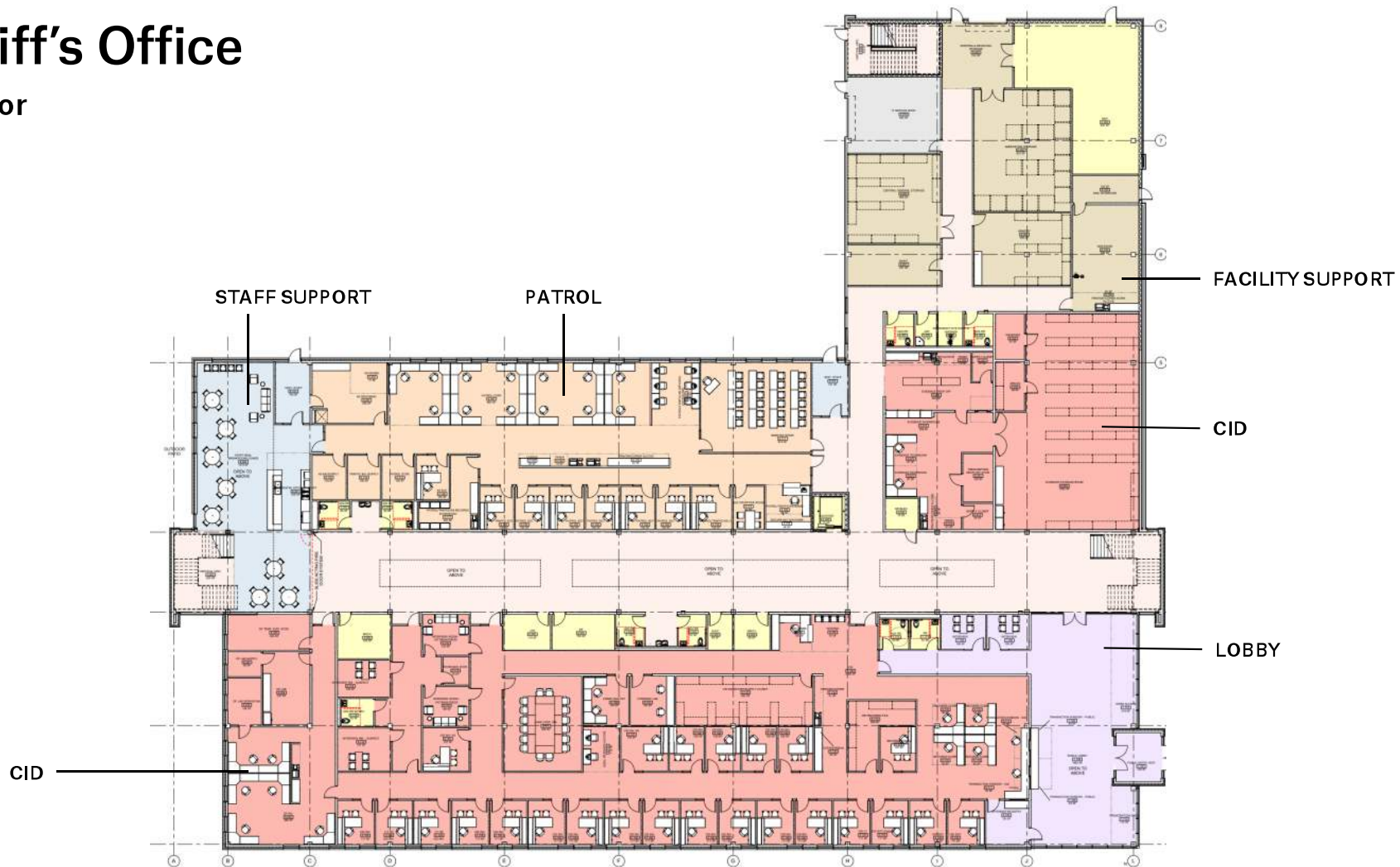
Sheriff's Office

Site Plan



Sheriff's Office

First Floor

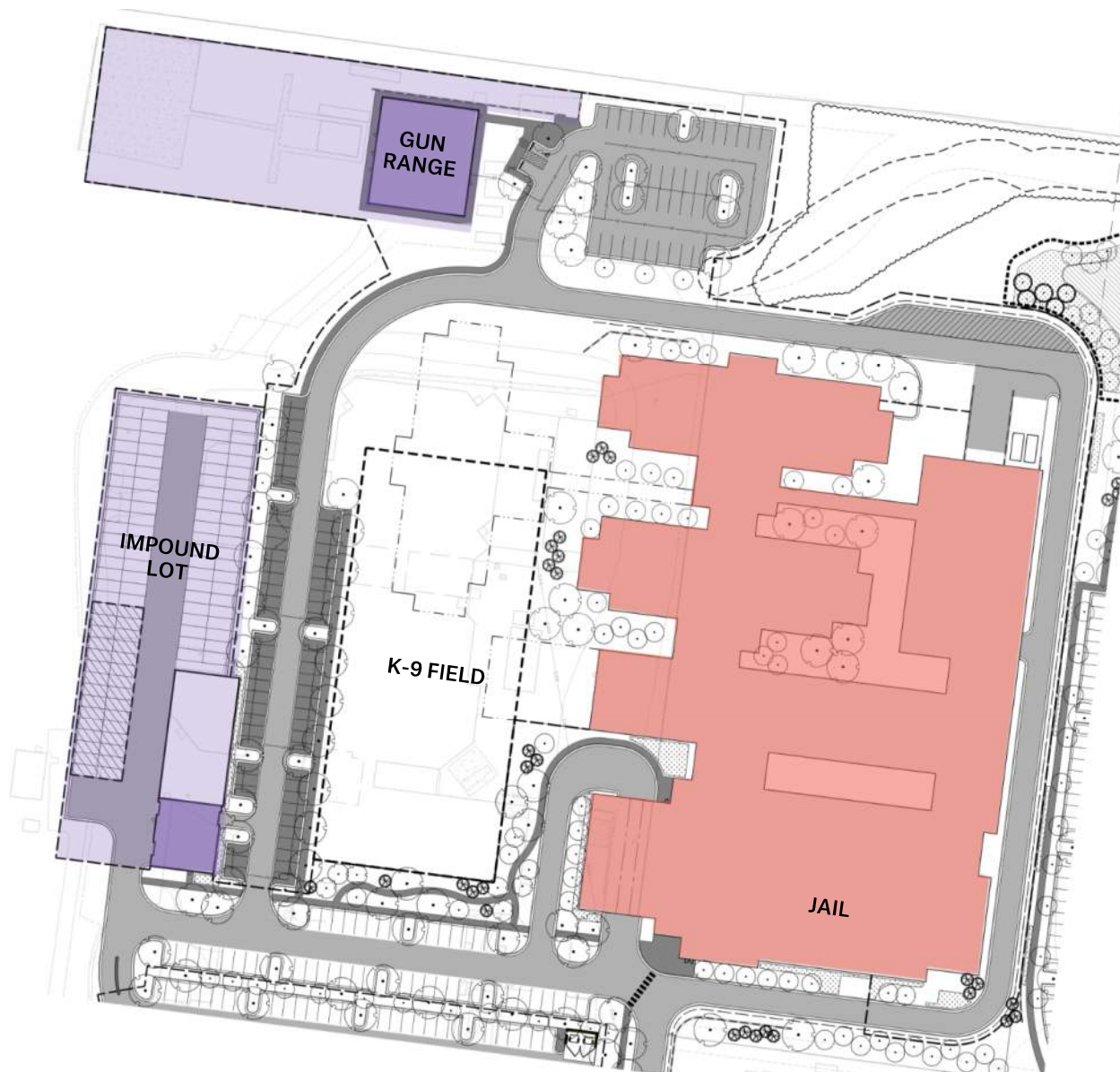


Sheriff's Office

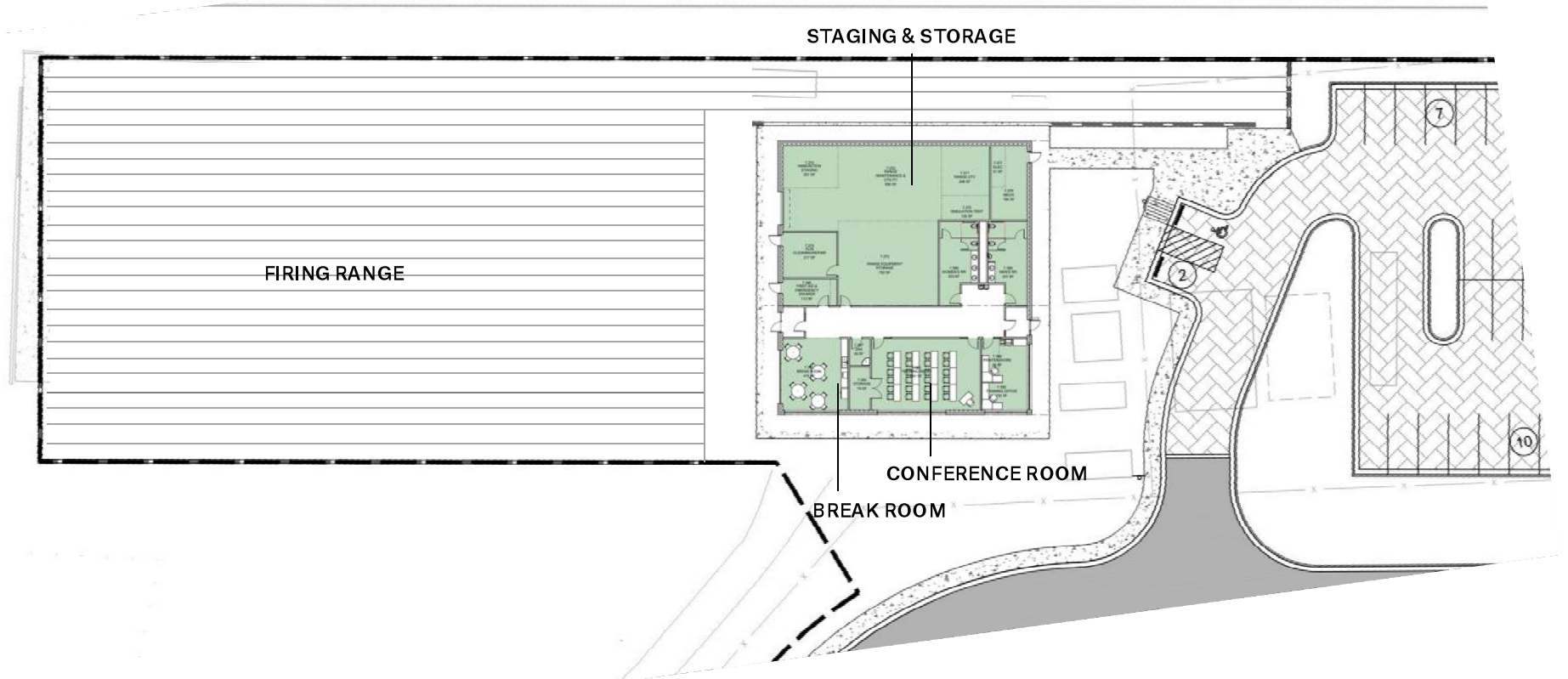
Second Floor



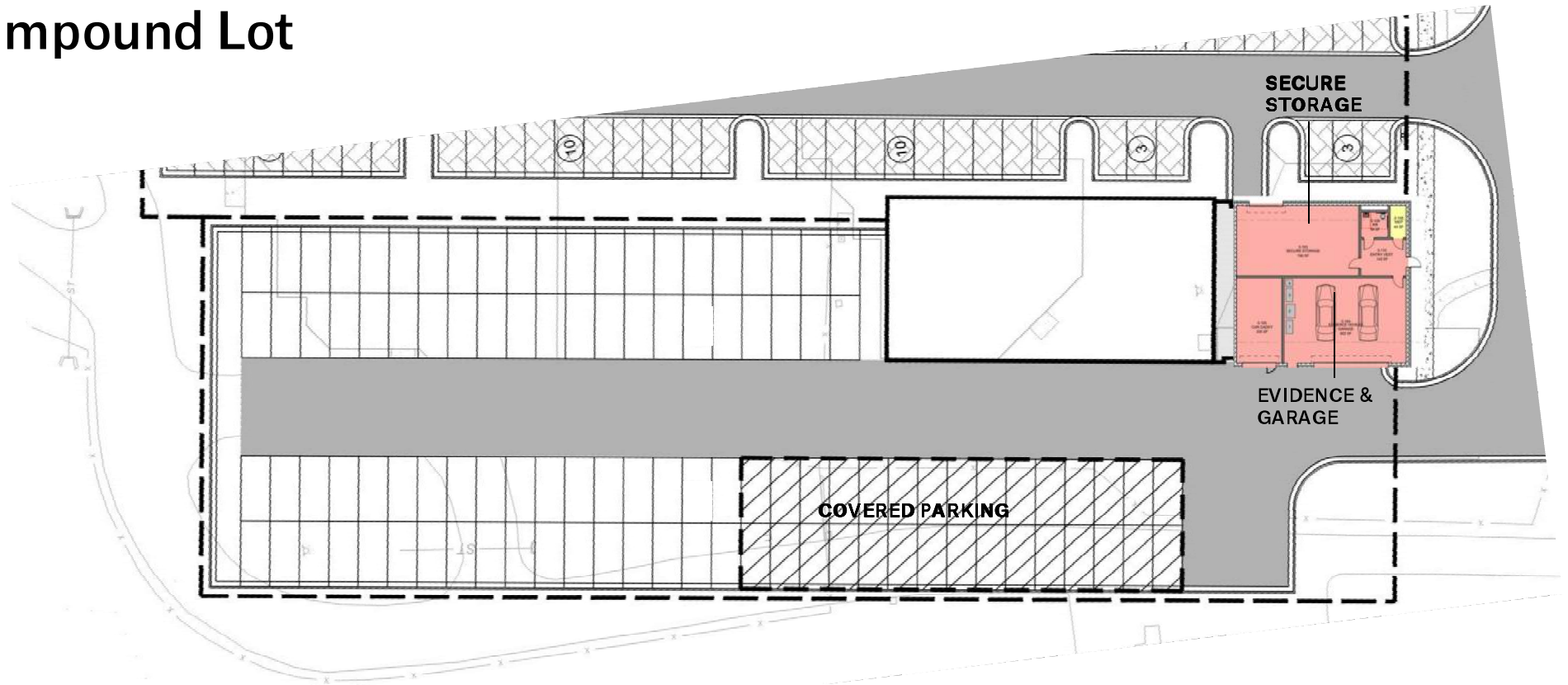
Gun Range & Impound Lot Site



Gun Range



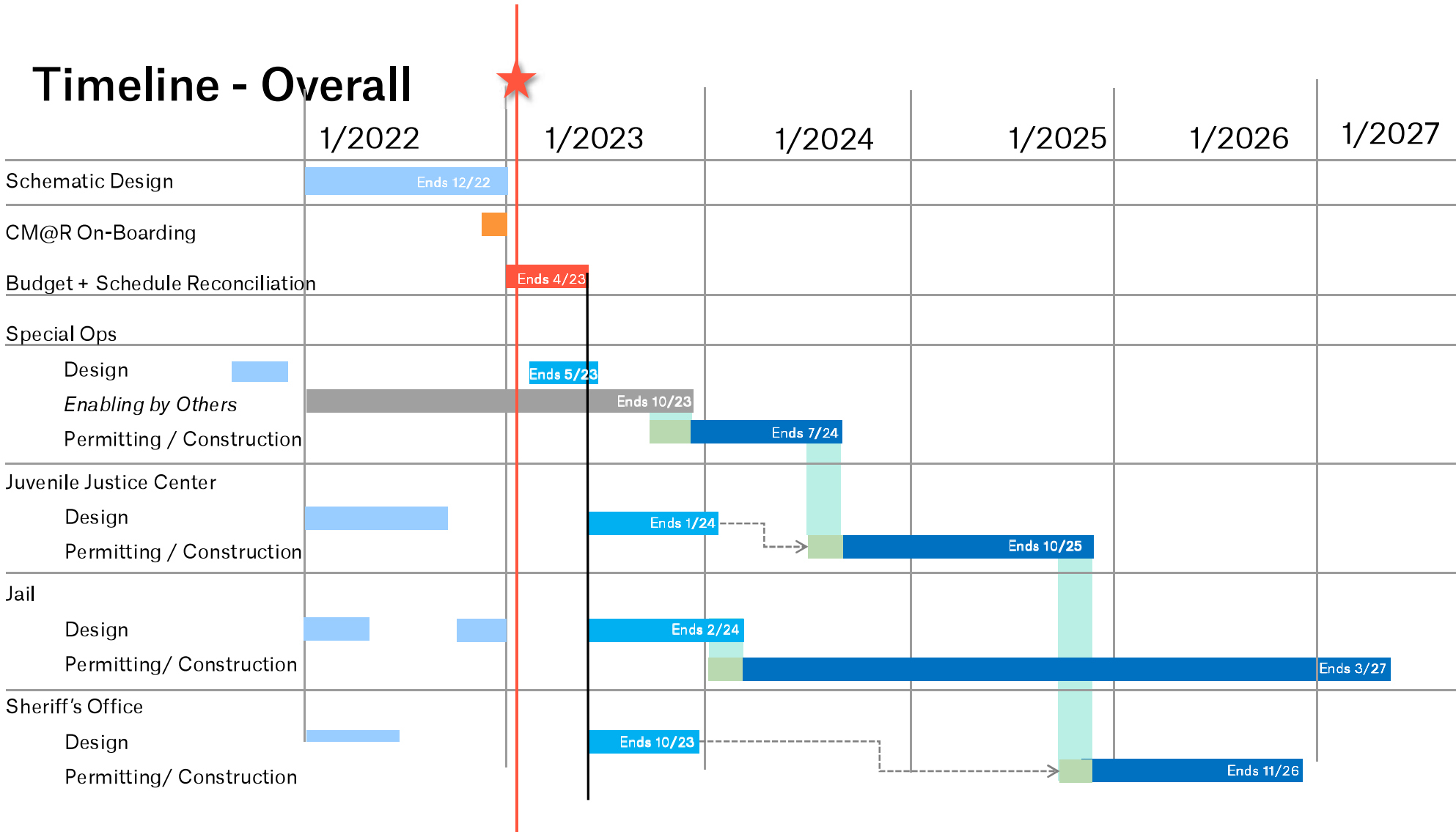
Impound Lot



Construction Timeline



Timeline - Overall



Next Steps

1. Complete Schematic Design Budget and Scope Reconciliation
2. Coordinate Construction Schedule with Construction Managers at Risk
3. Develop Staffing and Operating Budgets

Overview of Cost Comparison

2022 SD Budget	Total Capital Budget	2021/2022	2022/2023	2023/2024	2024/2025	2025/2026	2026/2027	2035/2039	2045/2049
Juvenile Justice Center/ Alternative Learning Center	\$81,918,661	\$849,556	\$1,200,00	\$39,934,553	\$39,934,553				
Adult Detention Center	\$165,048,000	\$1,075,732	\$1,500,000	\$40,618,067	\$40,618,067	\$40,618,067	\$40,618,067		\$69,000,000
Special Operations	\$12,664,600	\$312,678	\$9,263,942	\$3,087,981					
Sheriff's Office	\$27,755,000	\$522,086		\$1,200,000	\$9,111,520	\$16,921,394			
Courts	\$36,036,516							\$36,036,516	
Totals	\$323,422,777	\$2,760,052	\$11,963,942	\$84,840,600	\$89,664,139	\$57,539,461	\$40,618,067	\$36,036,516	\$69,000,000
		\$287,386,261							\$69,000,000
		6 Year Phase 1 Funding Plan							Phase 3

Thank you



TREANOR **HL**